

# Datasheet

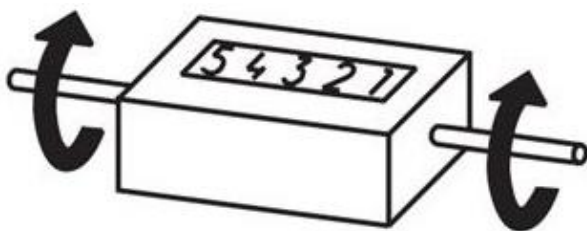
- 5 digits
- Mechanical counters for length measurement
- With default setting for switch-off position
- Zero position can be set manually using the red button
- With microswitch: 5A (250 VAC)



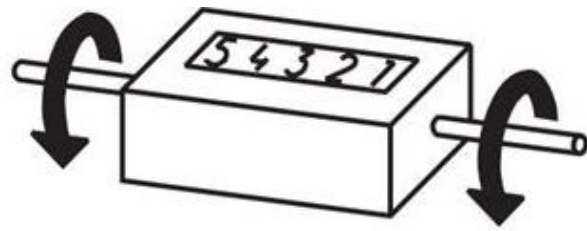
## Mechanical Data

Dimension	
Housing	92 x 80 x 69 mm
Shaft	Ø 7 mm
Material	
Housing	Aluminium
Shaft	Steel
Display	
Preset Value	5-digits
Digits High	8 mm
Rotational Speed	500 rpm
Transmission Ratio	
Meter Counter	2:1    Measuring Wheel 50 cm
Revolutions	0000,5 =

## Counting Direction



**Away** from the viewer  
 Counting direction: **ascending on the right R**  
 clockwise



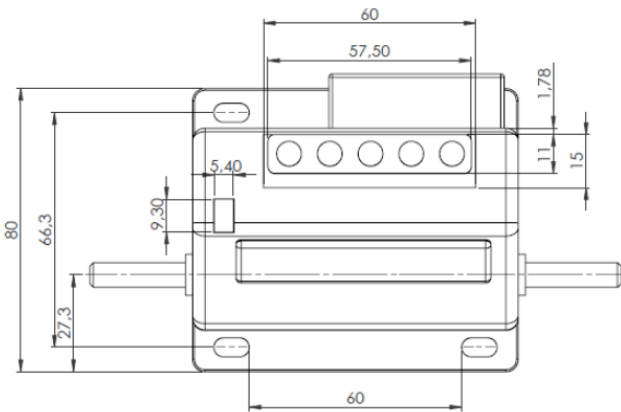
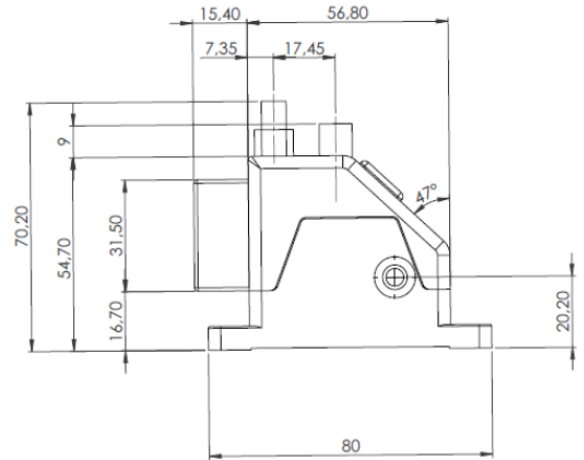
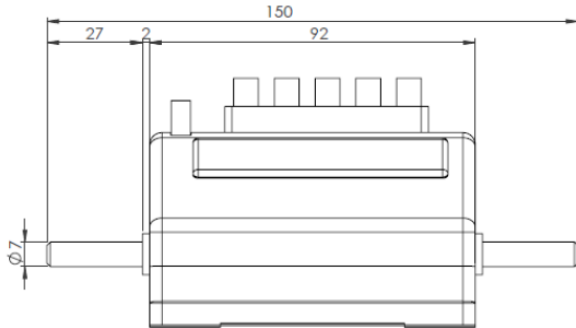
**Towards** the viewer  
 Counting direction: **ascending on the left L**  
 counter-clockwise

## Electrical Data

Microswitch	5 A (250 VAC)
-------------	---------------

# Datasheet

## Dimensions

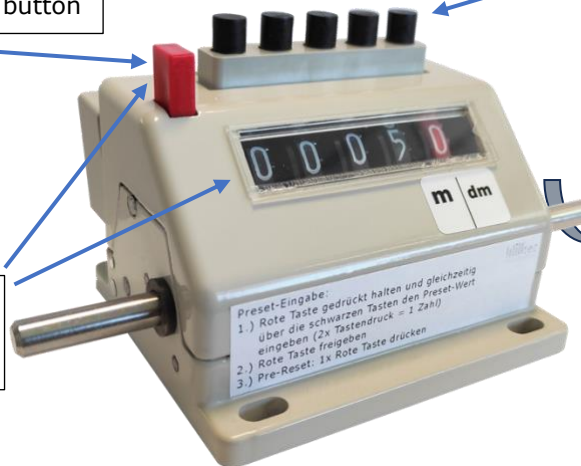


## Operation

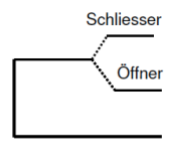
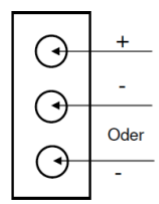
1. Press and hold the red button

2. Select the corresponding numbers by pressing the black buttons

3. Release the red button and make sure that the numbers are in a row



Right ascending



# Datasheet

## Ordering Example

**Meter Counter - Mechanical**    **MZ/M**   -   **530**   -   **0000,5**   -   **R**   -   **0**   -   **X**

**Counter**  
**530**

**Display Value/ Revolution**  
**0000,5**     = 5-digits

### Counting Direction

**L**     = ascending on the left  
**R**     = ascending on the right

### Version

**0**     = Standard

### Measuring Wheels

**X**     = without Measuring Wheel

Without prior notice, the products may be subject to modifications that the Manufacturer reserves to introduce as deemed necessary for their improvement.